

4-day shooting, stalking and butchery course outline

Welcome to the OENZ 4-day rifle skills and practical hunting course, we are excited to have you along. Below is a Course outline for the full duration of your course. We will aim to deliver the content in logical order that is as close to this course outline as feasible. Your instructor/s may change the order or location that content is delivered to best meet the outcomes of the course. New Zealand weather changes quickly and often so we find it works better to have a bit of flexibility.

Hotel Pick-up's

If you are travelling from out of town, we will collect you from your accommodation. We will confirm your pick-up time in email leading up to your course.

Pick-ups from meeting locations

We will have space for you in one of the OENZ vehicles. You can get dropped off or leave your vehicle at any of the meeting locations. If you would like to drive your own vehicle to the training location or through to the lodge, you're welcome to do so, but please meet at one of the locations below.

- **10:30am- Yaldhurst McDonalds.** Parking available on outside McDonalds carpark.

If you would like to meet us somewhere different, please contact us before your course.



Day 1 - Gun shop & travel to private estate

Day one we head to the shooting range and private hunting estate near Fairlie. On the way we will stop at Shooter Supplies on the outskirts of Christchurch.

Note: If you are renting a firearm this will done directly from the range/private estate once we arrive.

10:30-11:00am At shooters supplies

- pick up stored firearms and any additional supplies
- Purchase any ammo or supplies needed for next 4 days

12:00 – 12:30 pm Lunch & Supermarket stop in Ashburton

2:30 pm Arrive at private estate & shooting range

2:30 – 4:00 pm Move into farmhouse

3:00 – 5:30 pm Firearms information session & range paperwork

- Firearms safety & range rules
- Types of firearms available and their uses (physical examples available)
- Rifle calibres explained
- Choosing the correct type of firearm & calibre for you
- Correct fitment of rifle & scope to the hunter

DAY - 2 Marksmanship (shooting practice) & Afternoon/Evening hunt

7:30-8:30am Breakfast

8:30-12:30 At the Square range (100-300mtr range)

- Cleaning and maintaining a firearm
- Dismantling and servicing a rifle & Scope
- Sighting-in/zeroing a rifle

12:30-1:00 pm Lunch (at the range)

- Shooting from different positions
 - Prone (lying down)
 - Sitting
 - Kneeling
 - Standing

3:00-7:00pm Afternoon/Evening hunt

A chance to locate and shoot deer, pigs and wallabies. Hunting opportunities exist within 15 minutes' walk of the accommodation.

7:30pm- Dinner (Back at the farmhouse)



Day 3 – Hunting & Marksmanship

6:30-7:30 - Breakfast

7:30-10:30am? Morning Hunt (timing may vary depending on daylight hrs)

A chance to locate and shoot deer, pigs and wallabies.

11-12:30pm- At the long range (targets set out to 2000 meters)

- Use of ballistic apps
- Dialling/ adjusting up scopes
- Allowing for windage
- Truing your rifle and load (used to work out actual ballistics data)

12:30-1:00 pm-Lunch

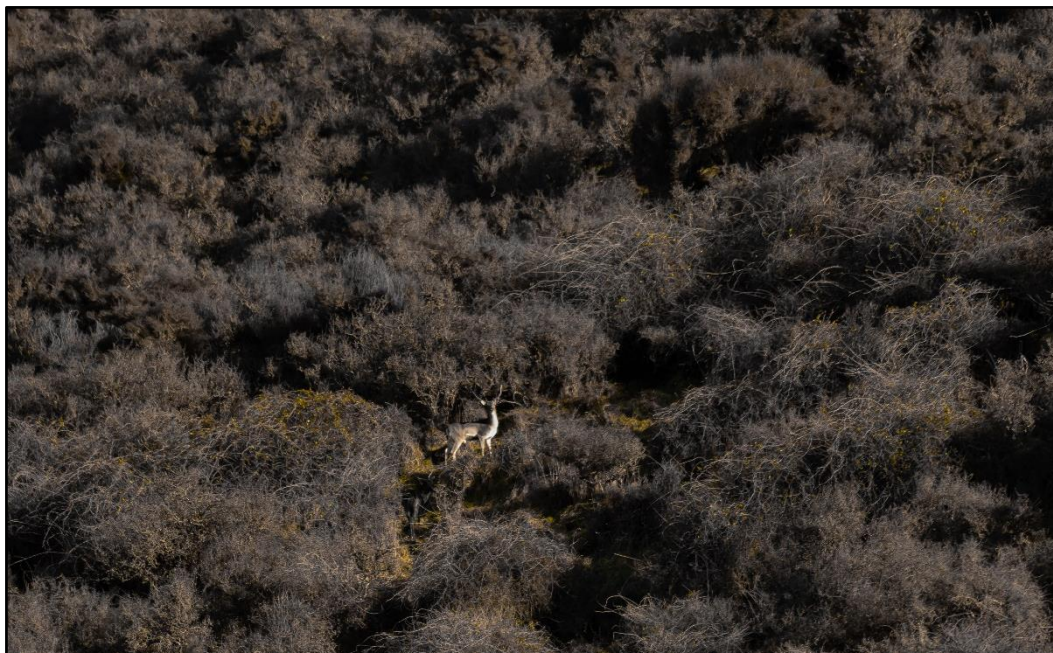
1:00-3:30 pm Ultimate hunter course

The ultimate hunter course is a 3.5 km loop track with 20 realistic, life size animal targets set out at distances from 50 meters to 450 meters. This course is designed to test you glassing skills as well as your marksmanship.

4:00-7:00 pm Afternoon/evening hunt (timing may vary depending on daylight hrs)

Another chance to locate and shoot deer, pigs & wallabies.

7:00-8:00 pm Back to farmhouse/Dinner



Day 4 – Butchery

7:30-8:30-Breakfast

8:30-12:30 Butchery session

- Field butchery (If not covered earlier in course)
- Management of meat in the bush/back country
- Skinning
- Trophy capping
- ID cuts of meat

12:30-1:30 – Lunch and pack-up farmhouse

1:30-2:00 – Course wrap-up

2:00pm - Depart private estate

2:00-5:00 pm- Travel back in Christchurch around

Our expected arrival time at Christchurch airport will be 5:00 pm. If you are flying out this evening please book flights with a check-in time after 6:00 pm. Christchurch city centre hotels are approximately 20 minutes from the airport.

**Please note that this is just a guide to how the course normally run and your instructor may run the course in a different order to best fit in with local conditions and the abilities or the group.*

